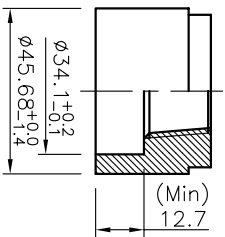
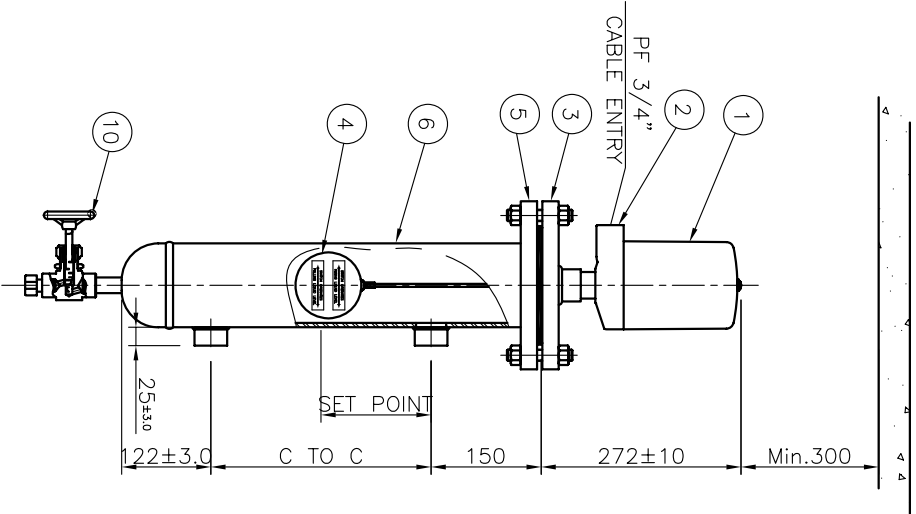


WIRING DIAGRAM

8 SNAP SWITCH



PROCESS CONNECTION



| NO. | TAG NO. | FLUID(UPPER/LOWER) | OPER. PRESS.<br>MAX.(Bar) | OPER. TEMP.<br>MAX.(°C) | RATING | SET<br>POINT | C TO C<br>(MEASURING RANGE) | CONNECTION<br>1"Sw 3000#<br>(SIDE-SIDE) | Q'TY |
|-----|---------|--------------------|---------------------------|-------------------------|--------|--------------|-----------------------------|---|------|
| 1   | -       | -                  | -                         | -                       | 150#   | 150          | -                           | -                                       | SETS |

TOTAL Q'TY : - SETS

|    |                         |
|----|-------------------------|
| OR | OPENS ON RISING LEVEL   |
| CR | CLOSES ON RISING LEVEL  |
| OF | OPENS ON FALLING LEVEL  |
| CF | CLOSES ON FALLING LEVEL |
| V  | SWITCH ACTION           |

| REV. | DESCRIPTION | DATE | DESIGNED | REVIEWED | APPROVED |
|------|-------------|------|----------|----------|----------|
| △    |             |      |          |          |          |
| △    |             |      |          |          |          |
| △    |             |      |          |          |          |
| △    |             |      |          |          |          |
| △    |             |      |          |          |          |

DESIGN DATA

| CODE          | KEPIC MGE & ASME B31.1                  |  |                   |
|---------------|---|--|-------------------|
| UNIT          | mm                                      |  |                   |
| ENCLOSURE     | WEATHER PROOF                           |  |                   |
| ORDERING CODE | PROCESS TEMP (CONTACT RATING)           |  | SNAP SWITCH MAT'L |
| 1             | Max. 120°C (10A 120V AC / 0.6A 125V DC) |  | PC, PHENOL,304SS  |
| 2             | Max. 230°C (5A 250V AC / 0.5A 125V DC)  |  | PC, CERAMIC,304SS |
| 3             | Max. 400°C (1A 250V AC / 1A 30V DC)     |  | PC, CERAMIC,304SS |
| 4             | Max. 230°C (15A 250V AC / 1A 30V DC)    |  | PC, CERAMIC,304SS |
| 5             | Max. 400°C (1A 115V AC / 3A 28V DC)     |  | PC, CERAMIC,304SS |
|               | HERMETICAL SEAL TYPE                    |  |                   |

NOTES

- REFER TO INSTALLATION MANUAL WHEN YOU SET IT UP
- CABLE SIZE : 14 AWG.
- DEAD BAND IS 15mm FIXEDLY
- HEAD ROOM OF 300mm MUST BE SECURED ABOVE THE HEAD FOR INSTALLATION / REMOVAL AND MAINTENANCE
- CABLE CONNECTION IN TERMINAL PART VIA CLAMPED RING TYPE
- PAINTING SPEC : SEOJIN STD.
- TEST FOR WELDING : HYDRO TEST
- CHAMBER ORDERING INFORMATION, SMC-73CH-A-1-A-1-A-1-E-1-A

| 12 | GASKET             | 316SS           | 1   |               |
|----|--------------------|-----------------|-----|---------------|
| 11 | NUTS               | A194 GR 2H      | -   |               |
| 10 | BOLTS              | A193 B7         | -   |               |
| 9  | GLOBE VALVE        | -               | 1   | NPT 1/2"      |
| 8  | SNAP SWITCH        | -               | 1   |               |
| 7  | PROCESS CONNECTION | A105            | 2   | 1"Sw 3000#    |
| 6  | CHAMBER ASS'Y      | A105g / A24 WEB | 1   | 4" Sch.40     |
| 5  | CHAMBER FLANGE     | A105            | 1   | 4" RF         |
| 4  | FLOAT              | 316LSS          | 1   | φ90           |
| 3  | SENSOR FLANGE      | A105            | 1   | 4" RF         |
| 2  | BASE               | AC2B            | 1   |               |
| 1  | COVER              | C.S             | 1   |               |
| NO | DESCRIPTION        | MATERIAL        | QTY | SPECIFICATION |

BILL OF MATERIAL

| CUSTOMER | - |
|----------|---|
| PROJECT  | - |

TITLE  
VERTICAL FLOAT TYPE LEVEL SWITCH  
SMC-73F-1-A-1-A-1-A-1  
ASSEMBLY DRAWING

MANUFACTURER  
**Seojin Instech Co., Ltd.**

| SCALE | 1:1                 | REV. |  |
|-------|---------------------|------|--|
| DATE  | SJ-MO15-DWG-AP311-A | REV. |  |
| N/S   |                     |      |  |